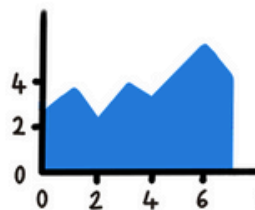
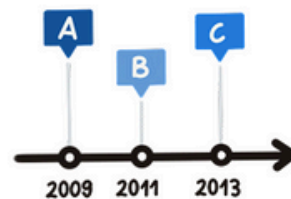


Heatmap



Area Chart



Timeline
Chart

Instructions



Setup

Shuffle all three decks (**Chart**, **Topic**, and **Special** Cards) and place them face-down.

For each round, draw one **blue Chart Card** and one **green Topic Card** for the whole group.

Each player draws one **yellow Special Card** individually—it's your personal challenge!

Not sure about how a chart type looks like? Flip through the Chart Description Booklet for examples.

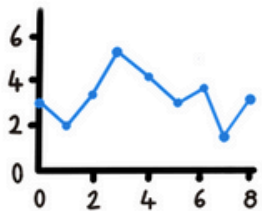


Sketch!

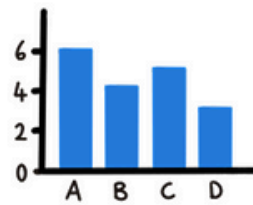
Grab your pencils and a sheet of paper and get creative!

Set a timer for **5 minutes** and sketch out the Chart defined on the **Chart Card** and tell a story to the provided topic, from the **Topic Card**! But make sure to follow the constraints from your individual **Special Cards**.

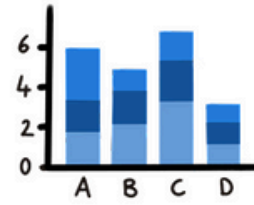
This isn't about artistic skills—it's about how effectively you can communicate data!



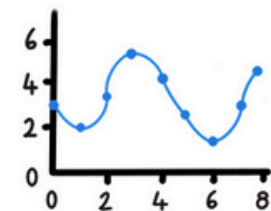
Line Chart



Bar Chart



Stacked Bar Chart



Spline Chart



Presentation & Discussion

One by one, all players present their visualisations. Explain your thought process:

Why did you design it this way? What decisions did you make? How did you incorporate the requirements of the Special Cards?

The group gives feedback: What worked well? What could be improved?



Voting & Scoring

Each player evaluates the other players' visualizations based on the following three factors:

- ★ **Creativity** - How unique is the visualization?
- 🎯 **Accuracy** - Is the diagram type used correctly?
- 👁️ **Readability** - Is it easy to understand?

Rate each of the other players in all three categories using a scale from 1 (very poor) to 5 (excellent). The player with the highest total score in the round wins a point!

In the event of a tie, all players with the highest score receive one point.



Winning

Keep playing until a player earns three points and wins, OR complete a number of predefined rounds. Whoever has the most points at the end wins!





Internet
Usage



Food
Waste

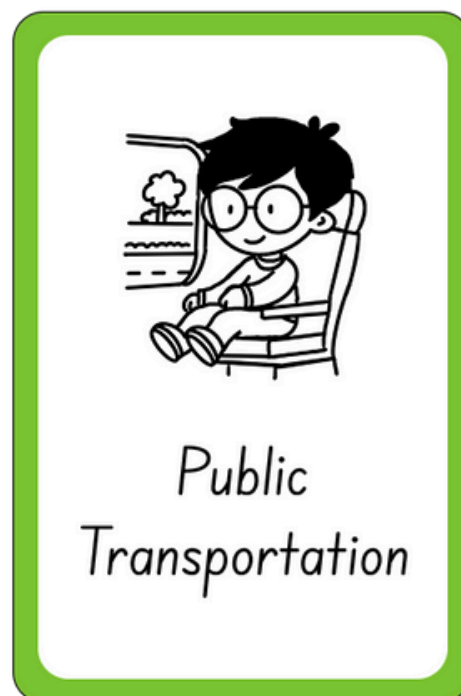
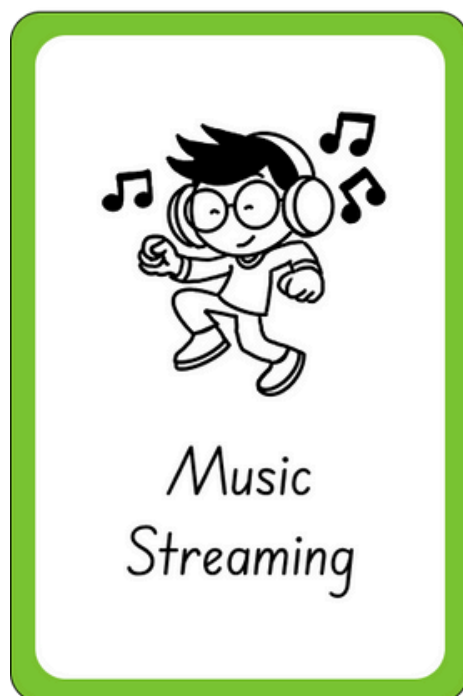
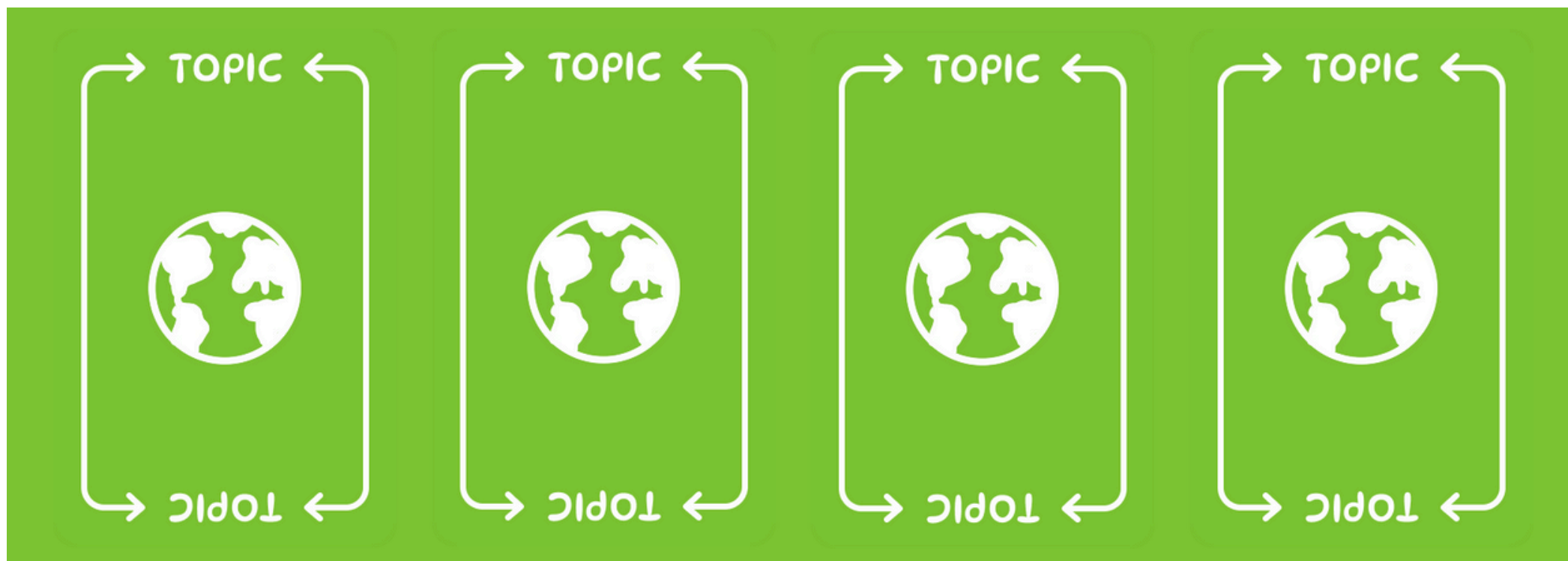


Climate
Change



Social
Media







Show a
comparison

*Compare two different time
periods or categories*



Add a legend

*Ensure that your visualization
includes a key*



Use time
intervals in
months

Focus on monthly changes



Use time
intervals in
years

Focus on annual changes



→ SPECIAL ←

→ SPECIAL ←



→ SPECIAL ←

→ SPECIAL ←



→ SPECIAL ←

→ SPECIAL ←



→ SPECIAL ←

→ SPECIAL ←



*Use time
intervals in
decades*

Show long-term trends



*Highlight
anomalies*

*Make unusual
spikes/drops stand out*



*Include a
forecast*

*Predict future values
based on trends*



*Use at least 2
different colors*

Let the colors speak!



*Use at least 3
different colors*

Let the colors speak!



*Add
illustrations*

*Make the chart
more fun*



Add icons

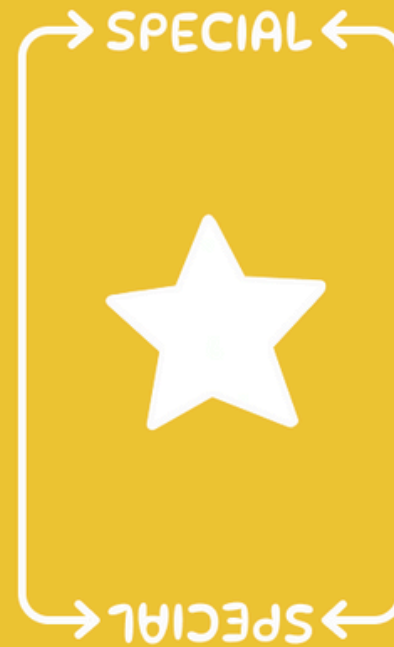
*Make the chart
more fun*



*Label at least
3 data points*

*Mark the most
important values*





*Empathize
the highest and
lowest value*

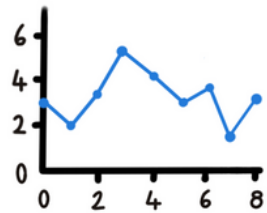
*Make extreme points
stand out*



*Use percentages
instead of
absolute values*

Show relative changes

Line Chart



A line chart or line graph shows trends over time by connecting a series of data points with straight line segments.

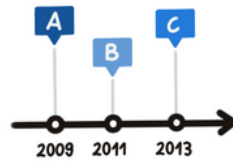


- Use different colors or line styles for comparison
- Start the Y-axis at zero



- Use with categorical X-axis
- Use overlapping colors without contrast

Timeline Chart



A Timeline Chart shows a list of events in chronological order.

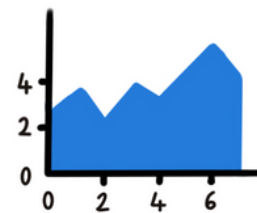


- Keep a consistent time interval
- Use icons or color-coding for event types



- Overload with minor events
- Don't let overlapping events collide

Area Chart



An Area Chart or Area Graph is similar to a Line Chart, but the area beneath the line is filled with colors or textures to emphasize volume.

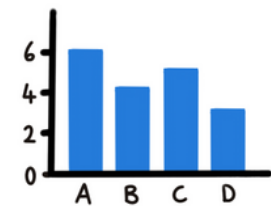


- Keep the number of layers limited
- Use stacked area only when total + sub-parts are meaningful



- Stack unrelated data
- Use too many layers

Bar Chart



A Bar Chart uses vertical bars to represent different categories or values over time. The bars are proportional to the values they represent.



- Start the Y-axis at zero
- Use consistent bar widths and even spacing



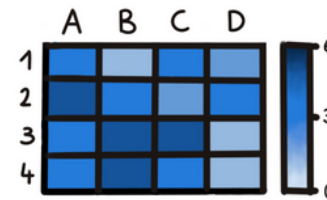
- Use 3D effects
- Overload the chart with too many bars

Drawagram

CHART DESCRIPTION BOOKLET



Heatmap



A Heatmap uses colours or shades to display different values in a matrix or grid format.



- Use a clear color scale
- Include a strong legend and axis labels



- Use too many color shades
- Rely on color alone

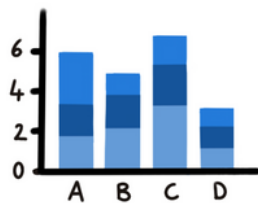
Welcome to the Drawagram Chart Guide!

On these pages you will find clear explanations and examples of all different chart types that are used in Drawagram, to help you create accurate and powerful visualisations.

Use this guide to level up your Drawagram game, refine your data visualisation skills and take your charts to the next level.

Happy drawing!

Stacked Bar Chart



A Stacked Bar Chart is an variation of the Bar Chart where the bars are divided into segments representing different subcategories. The segments are placed on top of each other.

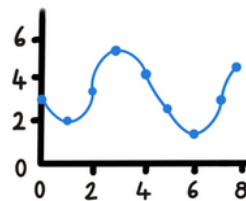


- Start the Y-axis at zero
- Use only when the whole matters



- Use too many small segments
- Stack unrelated or unbalanced categories

Spline Chart



A Spline Chart shows trends over time by connecting a series of data points with a curved line. The focus lies on the flow rather than exact value changes.



- Use when precision is less important than general trend
- Combine with point markers if exact data is needed



- Use for highly fluctuating data
- Suggest precision when it's not real

Voting Sheet

Your name: _____

Section A - Rate Fellow Players

Fellow Players			
Creativity (1-5)			
Accuracy (1-5)			
Legibility (1-5)			
Total Score			

Section B - Record Votes You Receive

Fellow Players			
Creativity (1-5)			
Accuracy (1-5)			
Legibility (1-5)			
Total Score			

Your final Score: _____

Instructions for Voting:

- Rate each player in every category using a scale from 1 to 10.
- Sum up each player's three category scores to calculate their total.
- After receiving all your votes sum the totals up and get your final score!
- The player with the highest total score wins the round!

Scoring Criteria:

- **Creativity:** How original, engaging, or innovative is the visualization?
- **Accuracy:** Did it correctly apply the assigned chart type and topic?
Does it fulfill the Special Card's requirements?
- **Readability:** Is the visualization clear and easy to understand? Are titles, labels, axes, and other elements present and readable?

Voting Sheet

Your name: _____

Section A - Rate Fellow Players

Fellow Players			
Creativity (1-5)			
Accuracy (1-5)			
Legibility (1-5)			
Total Score			

Section B - Record Votes You Receive

Fellow Players			
Creativity (1-5)			
Accuracy (1-5)			
Legibility (1-5)			
Total Score			

Your final Score: _____

Instructions for Voting:

- Rate each player in every category using a scale from 1 to 10.
- Sum up each player's three category scores to calculate their total.
- After receiving all your votes sum the totals up and get your final score!
- The player with the highest total score wins the round!

Scoring Criteria:

- **Creativity:** How original, engaging, or innovative is the visualization?
- **Accuracy:** Did it correctly apply the assigned chart type and topic?
Does it fulfill the Special Card's requirements?
- **Readability:** Is the visualization clear and easy to understand? Are titles, labels, axes, and other elements present and readable?

Voting Sheet

Your name: _____

Section A - Rate Fellow Players

Fellow Players			
Creativity (1-5)			
Accuracy (1-5)			
Legibility (1-5)			
Total Score			

Section B - Record Votes You Receive

Fellow Players			
Creativity (1-5)			
Accuracy (1-5)			
Legibility (1-5)			
Total Score			

Your final Score: _____

Instructions for Voting:

- Rate each player in every category using a scale from 1 to 10.
- Sum up each player's three category scores to calculate their total.
- After receiving all your votes sum the totals up and get your final score!
- The player with the highest total score wins the round!

Scoring Criteria:

- **Creativity:** How original, engaging, or innovative is the visualization?
- **Accuracy:** Did it correctly apply the assigned chart type and topic?
Does it fulfill the Special Card's requirements?
- **Readability:** Is the visualization clear and easy to understand? Are titles, labels, axes, and other elements present and readable?

Voting Sheet

Your name: _____

Section A - Rate Fellow Players

Fellow Players			
Creativity (1-5)			
Accuracy (1-5)			
Legibility (1-5)			
Total Score			

Section B - Record Votes You Receive

Fellow Players			
Creativity (1-5)			
Accuracy (1-5)			
Legibility (1-5)			
Total Score			

Your final Score: _____

Instructions for Voting:

- Rate each player in every category using a scale from 1 to 10.
- Sum up each player's three category scores to calculate their total.
- After receiving all your votes sum the totals up and get your final score!
- The player with the highest total score wins the round!

Scoring Criteria:

- **Creativity:** How original, engaging, or innovative is the visualization?
- **Accuracy:** Did it correctly apply the assigned chart type and topic?
Does it fulfill the Special Card's requirements?
- **Readability:** Is the visualization clear and easy to understand? Are titles, labels, axes, and other elements present and readable?

Voting Sheet

Your name: _____

Section A - Rate Fellow Players

Fellow Players			
Creativity (1-5)			
Accuracy (1-5)			
Legibility (1-5)			
Total Score			

Section B - Record Votes You Receive

Fellow Players			
Creativity (1-5)			
Accuracy (1-5)			
Legibility (1-5)			
Total Score			

Your final Score: _____

Instructions for Voting:

- Rate each player in every category using a scale from 1 to 10.
- Sum up each player's three category scores to calculate their total.
- After receiving all your votes sum the totals up and get your final score!
- The player with the highest total score wins the round!

Scoring Criteria:

- **Creativity:** How original, engaging, or innovative is the visualization?
- **Accuracy:** Did it correctly apply the assigned chart type and topic?
Does it fulfill the Special Card's requirements?
- **Readability:** Is the visualization clear and easy to understand? Are titles, labels, axes, and other elements present and readable?

Voting Sheet

Your name: _____

Section A - Rate Fellow Players

Fellow Players			
Creativity (1-5)			
Accuracy (1-5)			
Legibility (1-5)			
Total Score			

Section B - Record Votes You Receive

Fellow Players			
Creativity (1-5)			
Accuracy (1-5)			
Legibility (1-5)			
Total Score			

Your final Score: _____

Instructions for Voting:

- Rate each player in every category using a scale from 1 to 10.
- Sum up each player's three category scores to calculate their total.
- After receiving all your votes sum the totals up and get your final score!
- The player with the highest total score wins the round!

Scoring Criteria:

- **Creativity:** How original, engaging, or innovative is the visualization?
- **Accuracy:** Did it correctly apply the assigned chart type and topic?
Does it fulfill the Special Card's requirements?
- **Readability:** Is the visualization clear and easy to understand? Are titles, labels, axes, and other elements present and readable?

Voting Sheet

Your name: _____

Section A - Rate Fellow Players

Fellow Players			
Creativity (1-5)			
Accuracy (1-5)			
Legibility (1-5)			
Total Score			

Section B - Record Votes You Receive

Fellow Players			
Creativity (1-5)			
Accuracy (1-5)			
Legibility (1-5)			
Total Score			

Your final Score: _____

Instructions for Voting:

- Rate each player in every category using a scale from 1 to 10.
- Sum up each player's three category scores to calculate their total.
- After receiving all your votes sum the totals up and get your final score!
- The player with the highest total score wins the round!

Scoring Criteria:

- **Creativity:** How original, engaging, or innovative is the visualization?
- **Accuracy:** Did it correctly apply the assigned chart type and topic?
Does it fulfill the Special Card's requirements?
- **Readability:** Is the visualization clear and easy to understand? Are titles, labels, axes, and other elements present and readable?

Voting Sheet

Your name: _____

Section A - Rate Fellow Players

Fellow Players			
Creativity (1-5)			
Accuracy (1-5)			
Legibility (1-5)			
Total Score			

Section B - Record Votes You Receive

Fellow Players			
Creativity (1-5)			
Accuracy (1-5)			
Legibility (1-5)			
Total Score			

Your final Score: _____

Instructions for Voting:

- Rate each player in every category using a scale from 1 to 10.
- Sum up each player's three category scores to calculate their total.
- After receiving all your votes sum the totals up and get your final score!
- The player with the highest total score wins the round!

Scoring Criteria:

- **Creativity:** How original, engaging, or innovative is the visualization?
- **Accuracy:** Did it correctly apply the assigned chart type and topic?
Does it fulfill the Special Card's requirements?
- **Readability:** Is the visualization clear and easy to understand? Are titles, labels, axes, and other elements present and readable?